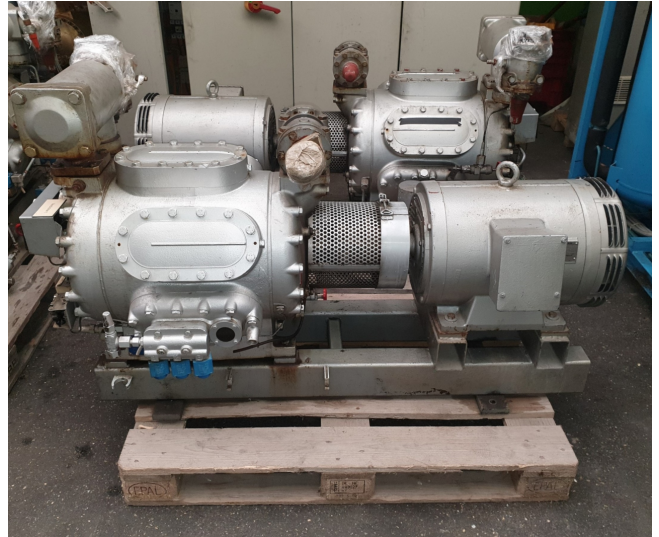


Sabroe CMO 26

Specifications

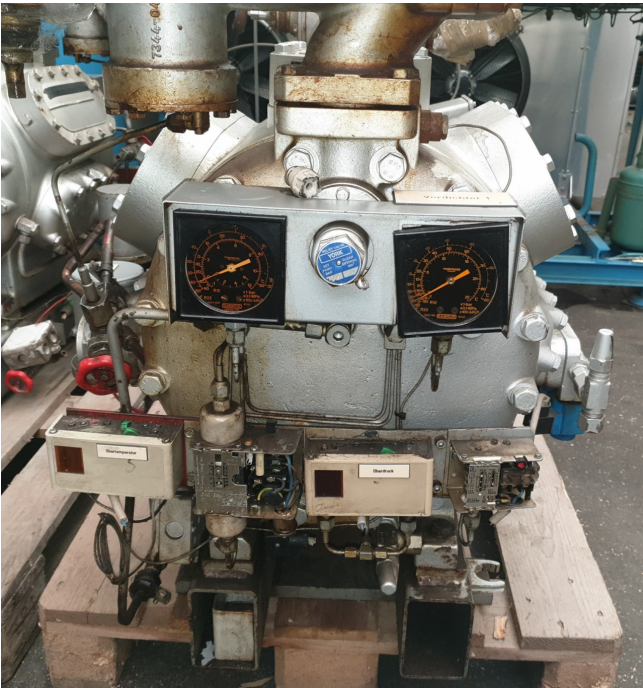
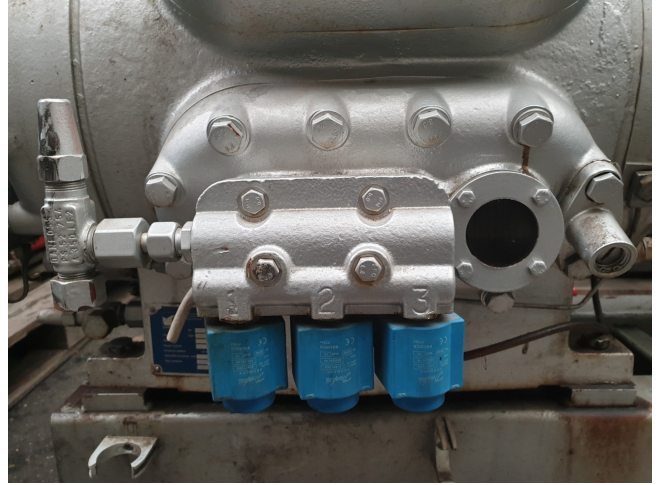
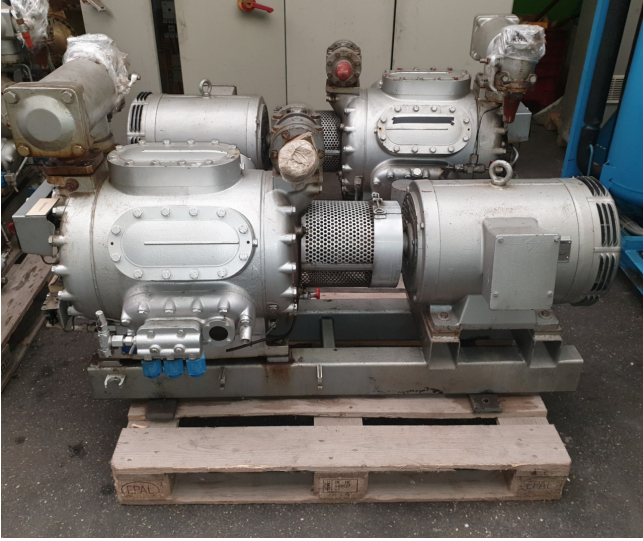
Hersteller	Sabroe
Typ	CMO 26
Kältemittel	Freon
Refrigerant type	R22 or other types
kW at +10°C/+40°C	155,7
kW at 0°C/+40°C	106,1
kW at -5°C/+40°C	86
kW at -10°C/+40°C	68,6
kW at -20°C/+40°C	41,3
kW at -30°C/+40°C	22,1
kW at -40°C/+40°C	9,3
E-Motor Specs	30kW at 1440RPM
Anlaufentlastung	✓
Leistungsregelung	✓
Auf einem Stahlrahmen	✓
Druckschalter	✓
Druckmanometer	✓
Schauglass	✓
Bemerkungen	Y.O.B 2008
Größe	1450x650x920 mm (LxWxH)
Stock	1

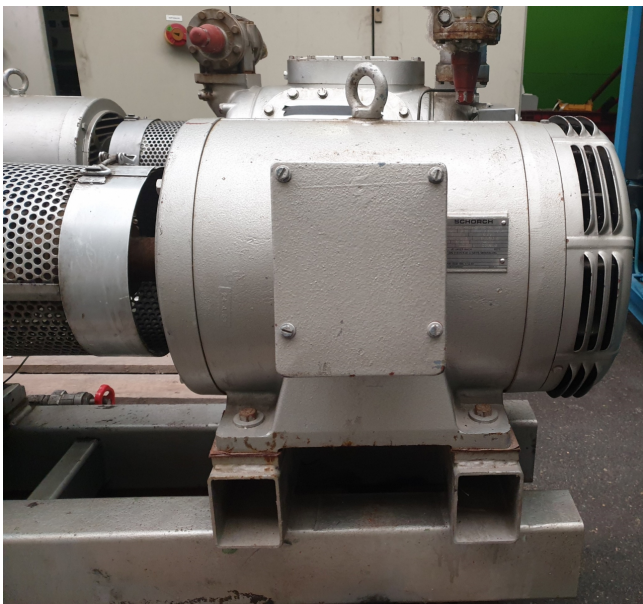


Description

Used Sabroe CMO 26

Used Sabroe CMO 26 single-stage reciprocating compressor with electro motor build by Schorch with 30kW and 1440RPM at 50 *Why choose for HOSBV? We're not only the largest used refrigeration specialist in Europe, but also, we deliver all equipment including an extensive test, warranty and industrial cleaning. *Optional we can also arrange the logistics.





Model	Number of cylinders	Swept volume at 1500 rpm	Swept volume at 1800 rpm	Nominal capacities in kW at 1500 rpm						Dimensions in mm			Weight excluding motor	Sound pressure level at 1500 rpm dB(A)
				R717		R404A		Direct coupled unit		L	W	H		
				Single-high stage	Booster	Single-high stage	Booster	L	W					
CMO 24	4	97	116	53	85	34	85	54	1400-2150	800	900	480	69	
CMO 26	6	146	175	79	127	21	127	41	1450-2175	800	900	530	71	
CMO 28	8	194	233	105	170	28	169	108	1475-2200	800	900	590	72	
CMO 34	4	113	136	62	100	17	99	63	1400-2150	800	900	480	70	
CMO 36	6	170	204	93	149	25	149	95	1450-2175	800	900	530	72	
CMO 38	8	228	273	123	199	33	198	127	1475-2200	800	900	590	73	

Nominal capacities are based on 1500 rpm and 5K liquid subcooling.
 All refrigerants make it possible to operate CMO compressors at speeds of up to 1800 rpm.
 1500 rpm at 50 Hz.
 1800 rpm at 60 Hz or VSD.

IBL-0511 01/2015



Your partner for used commercial and industrial refrigeration equipment
